

HOLOMONITOR® APP SUITE PROTOCOL

KINETIC PROLIFERATION ASSAY

This protocol helps to set up a Kinetic Proliferation Assay using HoloMonitor® M4 and the HoloMonitor® App Suite software. The HoloMonitor® Cell Proliferation Assay conveniently records non-invasive quantitative time-lapse images of cell cultures inside your incubator. While multiple image sequences are recorded, the assay automatically presents cell count and cell confluence data at user-selected intervals.

REQUIREMENTS:

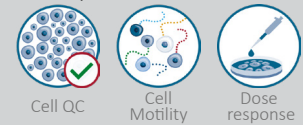
- HoloMonitor® M4, placed in incubator
- HoloMonitor® M4 App Suite
- Culture vessel of choice with cells
- HoloLid™ for selected vessel
- Vessel holder for selected vessel

OUTPUT:

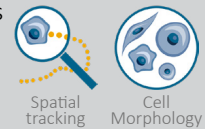
- Cell Count (cells/cm²)
- Confluence (%)

REANALYSIS:

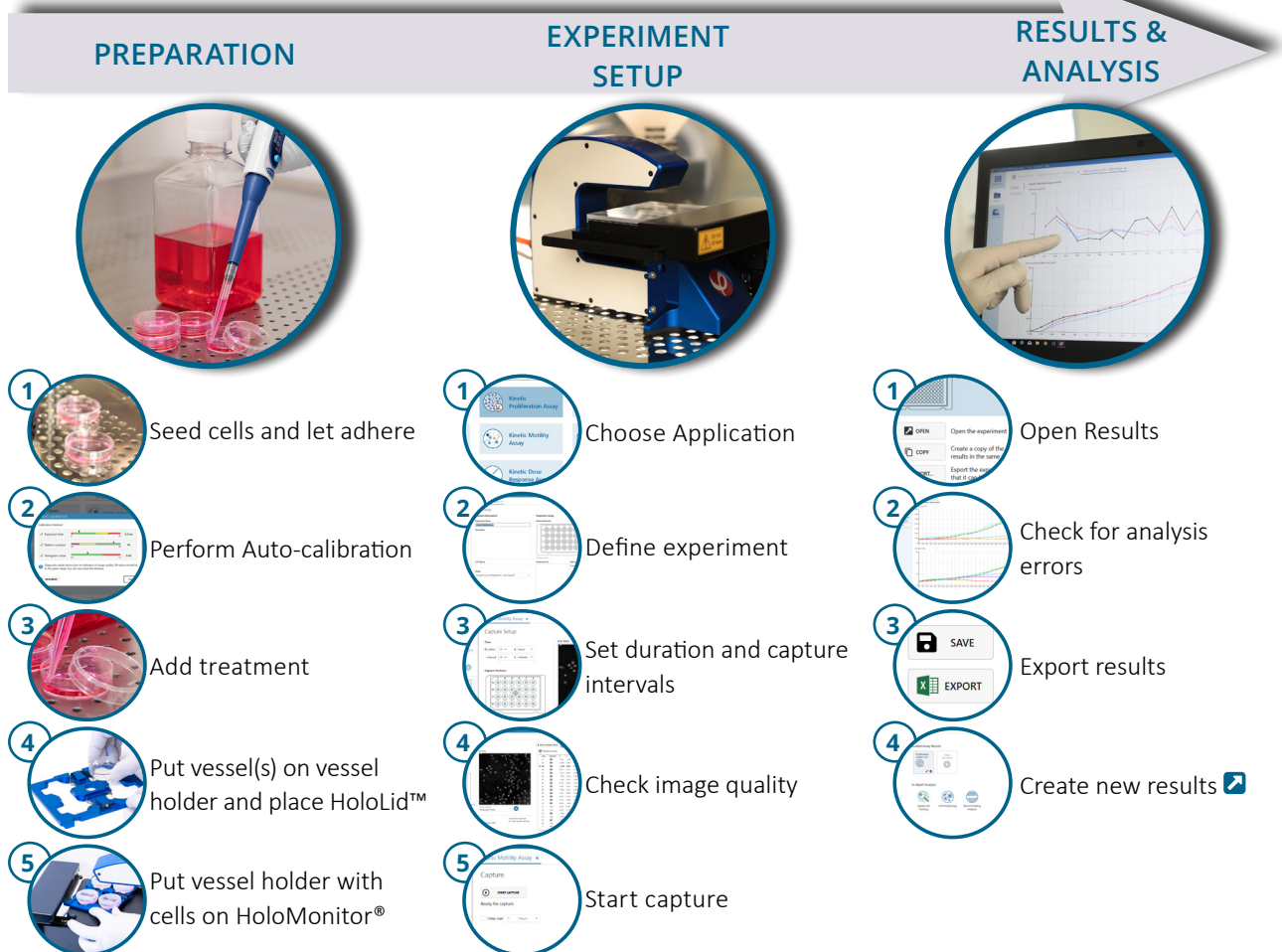
- Guided assays



- In-depth assays



WORK FLOW:



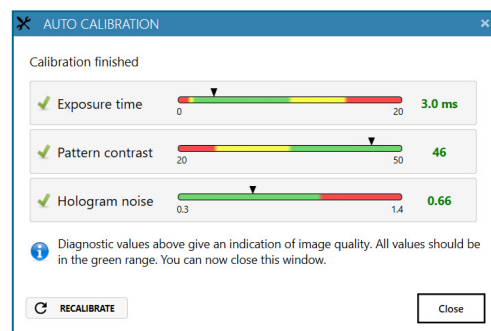
PREPARATIONS

Materials

- ✓ HoloMonitor® M4, placed inside the incubator
- ✓ HoloMonitor® App Suite software
- ✓ Cell culture vessel. Please check our [list](#) with recommended vessels.
- ✓ HoloLid™ for the selected vessel
- ✓ Vessel holder for the selected vessel
- ✓ Cells
- ✓ [Setup and Operational Manual](#) for HoloMonitor® M4

Steps

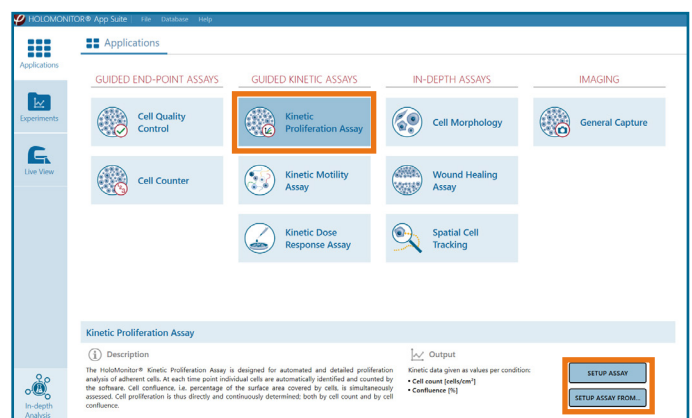
1. Seed the cells with about **5 % confluence** (ca. 6000 – 11000 cells/cm²).
 - ▶ Please note that too few cells may lead to inadequate results due to auto-focus failure.
2. Place the vessel in the incubator and let **cells attach** for 2-24 hours.
3. **Start the software** and wait for complete instrument **initialization**.
4. Run an **auto-calibration**. With successful calibration, the instrument is ready to use.
5. **Sterilize the HoloLids™** according to the specific [HoloLid™](#) protocol.
6. Add the **treatment** to your cells. The final working volumes per well, essential for using **HoloLids™**, are shown in the table:



Successful auto-calibration window

Vessel	HoloLid™	Final volume	Growth area, cm ² /well
Sarstedt TC-dish 35 (cat. 83.3900)	71110	3.0 mL/well	8.0
Sarstedt TC 6-well plate (cat. 83.3920.005)	71120	3.0 mL/well	8.8
Sarstedt lumox® 24-multiwell plate (cat. 94.6000.014)	71130	1.8 mL/well	1.9
Sarstedt lumox® 96-multiwell plate (cat. 94.6000.024)	71140	170 µL/well	0.2
ibidi® µ-dish 35 mm, high (cat. 81156)	71111	2.5 mL/well	3.5
ibidi® µ-plate 24 Well Black (cat. 81156)	71131	2.5 mL/well	1.9

7. **Slide** the cell culture vessel onto the Vessel holder, its grips facing towards you. Ensure that the vessel is parallel to the holder. There is a spring that holds the vessel in place.
 - ▶ When using multi-well plates, place them with the cut-off corner to the left.
8. **Replace** the standard lids with the **HoloLid™**.
9. **Put** the vessel holder with the sample on the **HoloMonitor® M4 stage** and click it to secure.
10. Select the **Kinetic Proliferation Assay** and proceed by clicking the **Setup Assay** button.

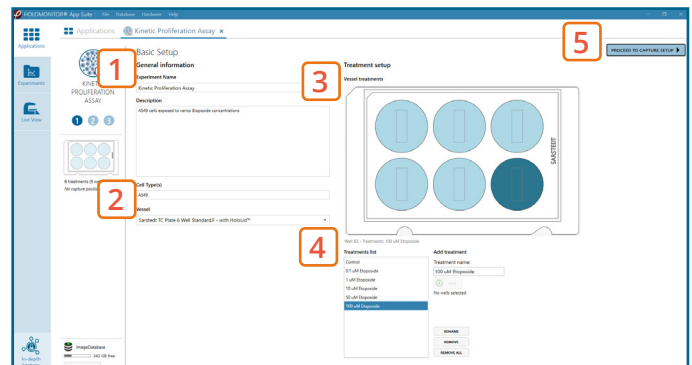


AppSuite main window with selected Kinetic Proliferation Assay

EXPERIMENT SETUP


1 Basic setup: describe the experiment and assign treatments/conditions to the wells

1. Enter the experiment **name**, optional experiment **description** and cell types.
2. Select the correct **vessel map** from the drop-down list.
3. Map **treatments and conditions** on the vessel map. **Select wells** by marking them with the left mouse button while moving the cursor over the relevant well/s.
4. Add the **treatment name/s** in the text box below the vessel map and click **Add** /press Enter. Marked well/s are light blue, selected wells will appear dark blue.
5. Proceed to **Capture setup**.



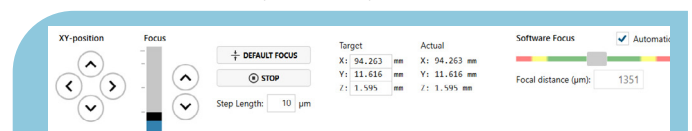
Basic Setup window

2 Capture setup: Select the experiment time settings and choose capture positions

1. Adjust the default settings for **duration**, **interval** and **number of positions**.
2. Ensure that the **storage requirement** for the experiment does not exceed the computer capacity.
3. Run a full or quick **validation** of the selected positions to ensure **good image quality**.
4. Click the **positions list** button to view the position list.
5. **Inspect the images** by hovering over the image icon in the list. Move the stage to that position by double clicking the icon. If the image quality is poor, a warning sign  appears. **Adjust** position location or focus if necessary.
6. When satisfied with the experiment setup, click **Proceed to Capture**.



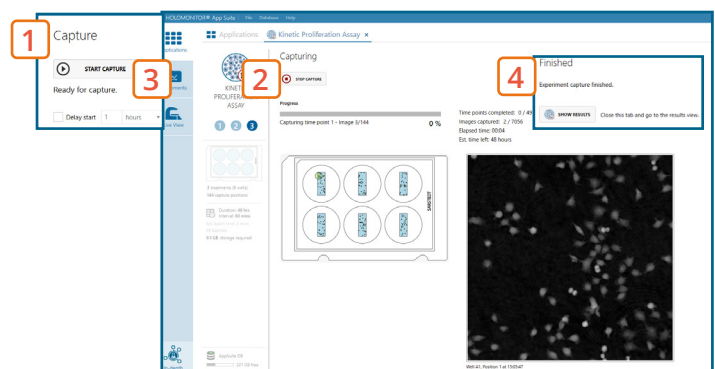
Capture Setup window



MANUAL FOCUS ADJUSTMENT: The focusing tool is located in the Controls tab. Move the black square or click on the Arrow buttons to move the stage up and down. Save an adjusted focus setting for the selected position by using the **Apply Current Focus** button. For details, consult the [Setup and Operational Manual](#).

3 Capture: Review the experiment in real-time during the time-lapse

1. Click **Start Capture**.
2. To stop the experiment ahead of time, click the stop button. Note that it is **NOT** possible to restart the experiment once it has been stopped.
3. Go to the **Experiments** tab and open your ongoing experiment to preview the results during the run.
4. When the Experiment capture finishes, click the **Show Result** button to get directly to the **Results** page.

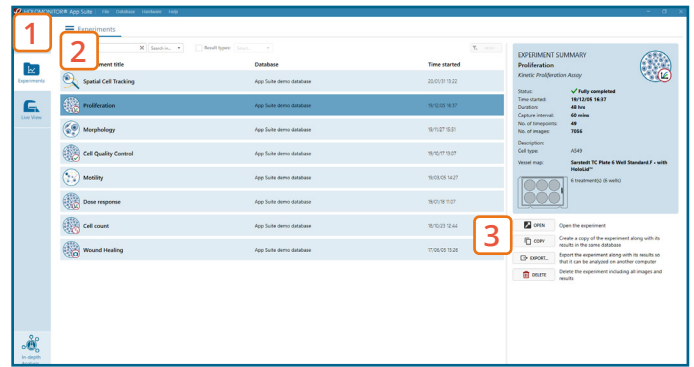


Capture window

RESULTS & ANALYSIS

Experiments tab

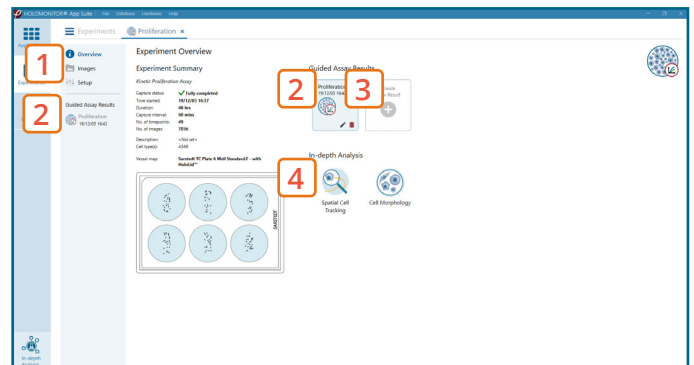
1. Click Experiments to see a **list of the experiments**.
2. Click on the experiment title to open an **experiment summary**.
3. Click **Open** to open the results page.



Experiments tab

Experiment overview tab

1. See the **experiment summary**, view **all images** and go to the experiment **setup** by choosing the respective tab.
2. Open the **experiment data** by clicking on the experiment result icon or its name in the Guided Assay Result list.
3. **Create New Results** from this experiment by clicking the button.
4. Reach **In-depth Analysis** by clicking the respective icon.



Experiment overview tab

Kinetic proliferation data results tab

- ✓ The assay results are generated during image capturing.
- ✓ The software automatically analyzes quantitative data generated from each image.
- ✓ For a more detailed analysis all results can be exported.

1. The results are given as graphs showing **Cell Count per cm²** and **Confluence (%)**. The graphs can be shown as normalized.
2. **Enlarge the graphs** to have a closer look.
3. For further analysis, **export all results to Excel**. The exported data include **population data based on means**, including data for each captured position and standard deviations.

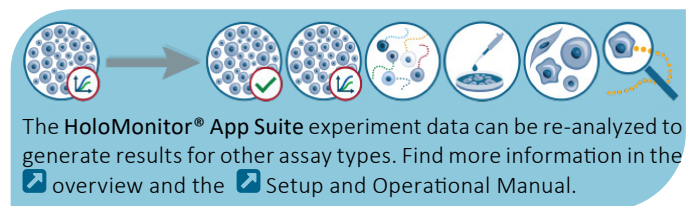
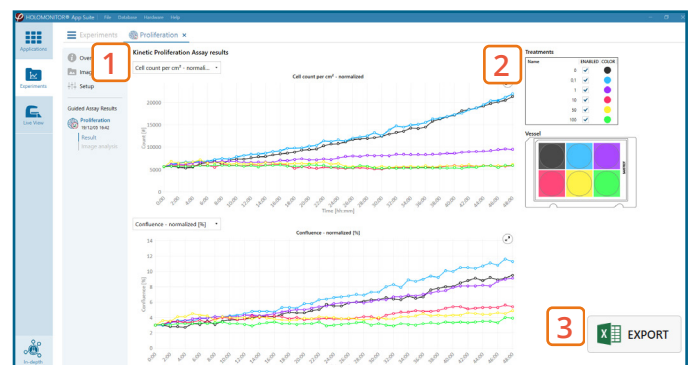


Image analysis tab

- ✓ An image analysis algorithm filters out images of poor quality and excludes them from results data.
- ✓ Include or exclude images from results analysis. See the [image guide](#) for more information.

1. The captured images from the experiment are displayed in a **tree-view list**. Clicking an item in the tree will show a list of all images contained in the selected level/category.
2. **Checked check boxes** — all images are included. **Empty check boxes** — all images are excluded. **Check boxes with a dash** — some images are included. Symbols in the list show cell analysis or image quality warning.
3. It is possible to adjust the Sensitivity of image(s) and view the image threshold and markers.



Proliferation results tab

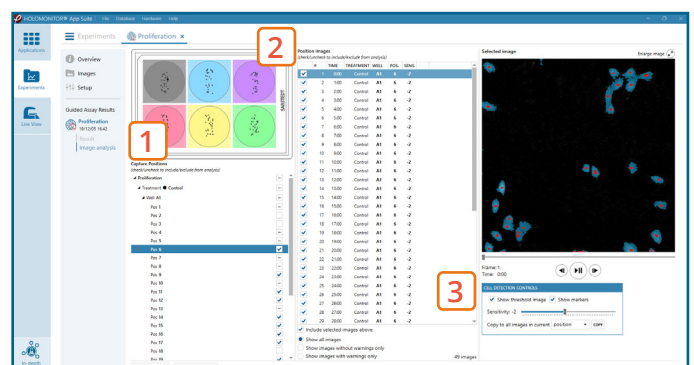


Image analysis tab