



# HOLOMONITOR<sup>®</sup> APP SUITE PROTOCOL

## KINETIC DOSE RESPONSE ASSAY

This protocol helps to set up a Kinetic Dose Response Assay using HoloMonitor<sup>®</sup> M4 and the HoloMonitor<sup>®</sup> App Suite software. The HoloMonitor<sup>®</sup> Kinetic Dose Response Assay automatically analyzes drug responses in adherent cells. Results are displayed as an interactive response curve, where results for each condition can be displayed for any selected time point.

### REQUIREMENTS:

- HoloMonitor<sup>®</sup> M4, placed in incubator
- HoloMonitor<sup>®</sup> M4 App Suite
- Culture vessel of choice with cells
- HoloLid<sup>™</sup> for selected vessel
- Vessel holder for selected vessel

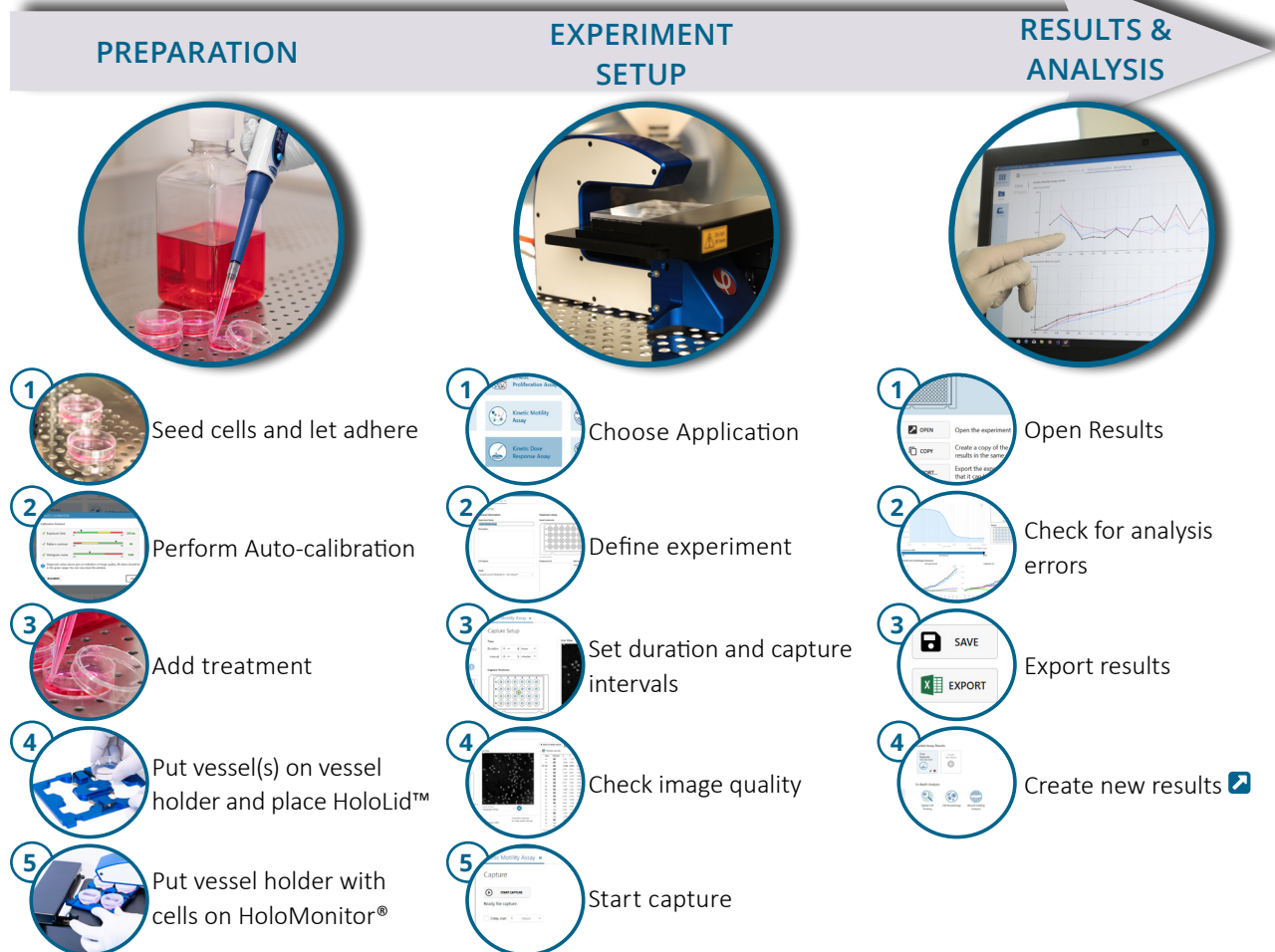
### OUTPUT:

- Interactive dose-response curve
- Cell count (cells/cm<sup>2</sup>)
- Confluence (%)
- Mean cell volume (μm<sup>3</sup>)

### REANALYSIS:

- Guided assays
  - Cell QC
  - Cell Proliferation
  - Cell Motility
- In-depth assays
  - Spatial tracking
  - Cell Morphology

### WORK FLOW:



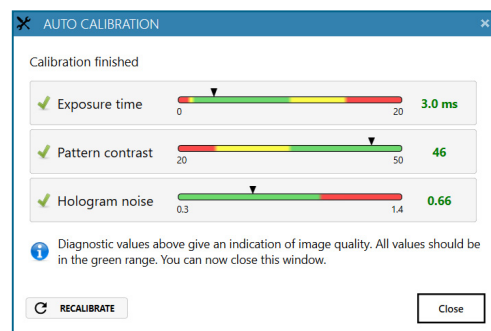
# PREPARATIONS

## Materials

- ✓ HoloMonitor® M4, placed inside the incubator
- ✓ HoloMonitor® App Suite software
- ✓ Cell culture vessel. Please check our [list](#) with recommended vessels.
- ✓ HoloLid™ for the selected vessel
- ✓ Vessel holder for the selected vessel
- ✓ Cells
- ✓ [Setup and Operational Manual](#) for HoloMonitor® M4

## Steps

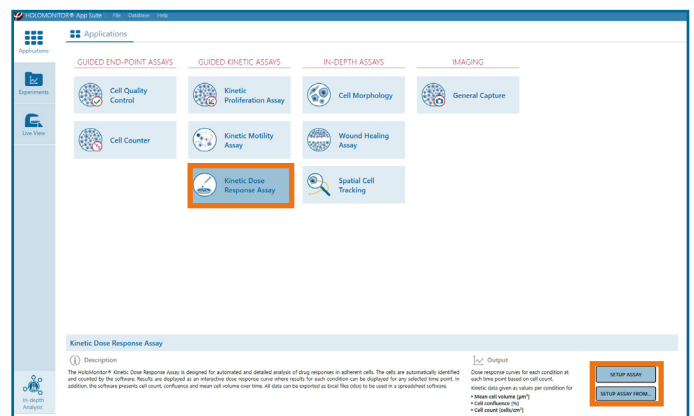
1. Seed the cells with about **5 % confluence** (ca. 6000 – 11000 cells/cm<sup>2</sup>).
  - ▶ Please note that too few cells may lead to inadequate results due to auto-focus failure.
2. Place the vessel in the incubator and let **cells attach** for 2-24 hours.
3. **Start the software** and wait for complete instrument **initialization**.
4. Run an **auto-calibration**. With successful calibration, the instrument is ready to use.
5. **Sterilize the HoloLids™** according to the specific [HoloLid™](#) protocol.
6. Add the **treatment** to your cells. The final working volumes per well, essential for using **HoloLids™**, are shown in the table:



Successful auto-calibration window

Vessel	HoloLid™	Final volume	Growth area, cm <sup>2</sup> /well
Sarstedt TC-dish 35 (cat. 83.3900)	71110	3.0 mL/well	8.0
Sarstedt TC 6-well plate (cat. 83.3920.005)	71120	3.0 mL/well	8.8
Sarstedt lumox® 24-multiwell plate (cat. 94.6000.014)	71130	1.8 mL/well	1.9
Sarstedt lumox® 96-multiwell plate (cat. 94.6000.024)	71140	170 µL/well	0.2
ibidi® µ-dish 35 mm, high (cat. 81156)	71111	2.5 mL/well	3.5
ibidi® µ-plate 24 Well Black (cat. 81156)	71131	2.5 mL/well	1.9

7. **Slide** the cell culture vessel onto the Vessel holder, its grips facing towards you. Ensure that the vessel is parallel to the holder. There is a spring that holds the vessel in place.
  - ▶ When using multi-well plates, place them with the cut-off corner to the left.
8. **Replace** the standard lids with the **HoloLid™**.
9. **Put** the vessel holder with the sample on the **HoloMonitor® M4 stage** and click it to secure.
10. Select the **Kinetic Kinetic Dose Response Assay** and proceed by clicking the **Setup Assay** button.

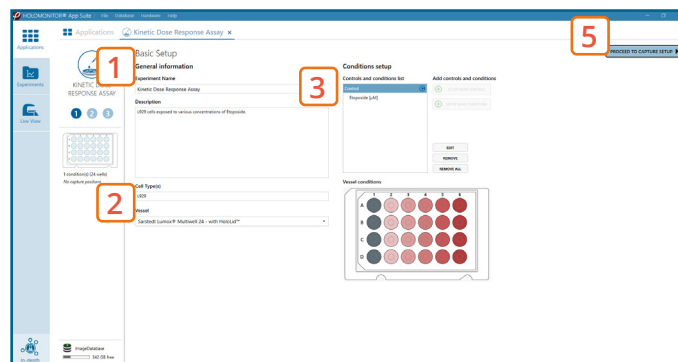


AppSuite main window with selected Kinetic Dose Response Assay

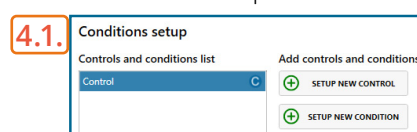
## EXPERIMENT SETUP

### 1 Basic setup: describe the experiment and assign treatments/conditions to the wells

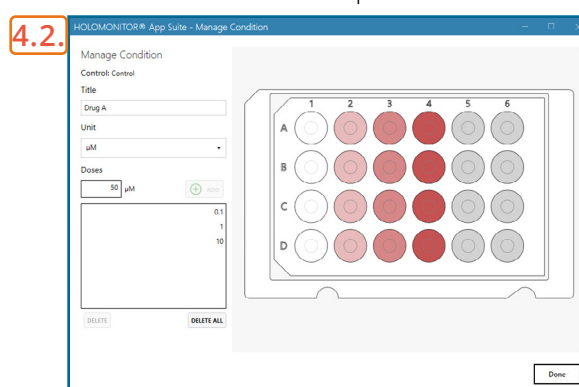
1. Enter the experiment **name**, optional experiment **description** and cell types.
2. Select the correct **vessel map** from the drop-down list.
3. Start by setting up a new control. Select **well/s** by marking them with the left mouse button while moving the cursor over the relevant well/s. It is possible to set several controls, e.g. for each cell line if more than one is used in the experiment – by using the **Setup New Control** button.
4. 1. Select a control in the Controls and Conditions list. Now, the **Setup New Condition** button gets activated. Click it to open the **Manage Condition** window.  
2. **Name** the condition/ treatment and **choose** the drug **unit**. Select the well/s, type in the corresponding drug **dose** and click **Add/ Enter**. Repeat for as many doses as needed for this drug. The color saturation of the wells is indicative of the dose concentration – the more saturated, the higher the dose. It is possible to add several different conditions, e.g. drugs, to the same control – by using the **Setup New Condition** button. The name of the condition needs to be unique.
5. Proceed to **Capture setup**.



Basic Setup window



Condition Setup window



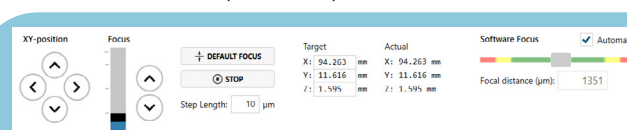
Manage Condition window

### 2 Capture setup: Select the experiment time settings and choose capture positions

1. Adjust the default settings for **duration**, **interval** and **number of positions**.
2. Ensure that the **storage requirement** for the experiment does not exceed the computer capacity.
3. Run a full or quick **validation** of the selected positions to ensure **good image quality**.
4. Click the **positions list** button to view the position list.
5. **Inspect the images** by hovering over the image icon in the list. Move the stage to that position by double clicking the icon. If the image quality is poor, a warning sign appears. **Adjust** position location or focus if necessary.
6. When satisfied with the experiment setup, click **Proceed to Capture**.



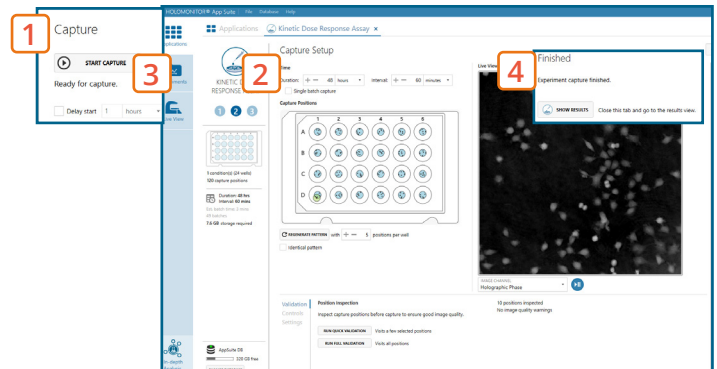
Capture Setup window



**MANUAL FOCUS ADJUSTMENT:** The focusing tool is located in the **Controls** tab. Move the black square or click on the Arrow buttons to move the stage up and down. Save an adjusted focus setting for the selected position by using the **Apply Current Focus** button. For details, consult the **Setup and Operational Manual**.

### 3 Capture: Review the experiment in real-time during the time-lapse

1. Click **Start Capture**.
2. To stop the experiment ahead of time, click the stop button. Note that it is NOT possible to restart the experiment once it has been stopped.
3. Go to the **Experiments** tab and open your ongoing experiment to preview the results during the run.
4. When the Experiment capture finishes, click the **Show Result** button to get directly to the **Results** page.

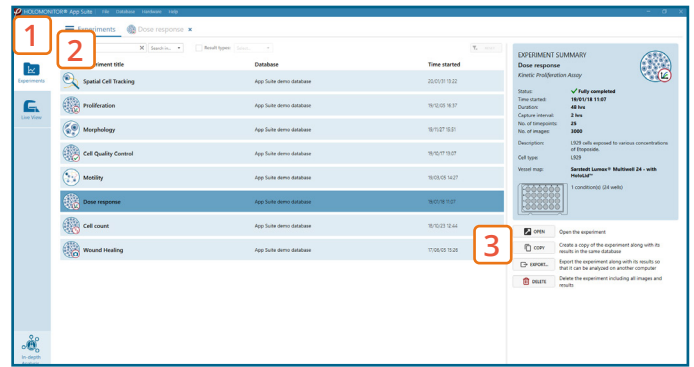


Capture window

# RESULTS & ANALYSIS

## Experiments tab

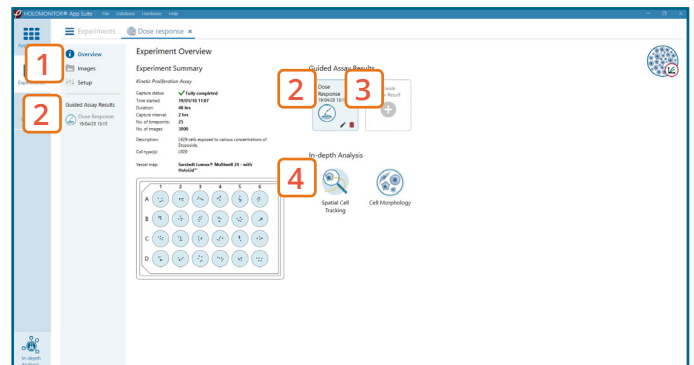
1. Click Experiments to see a list of the experiments.
2. Click on the experiment title to open an experiment summary.
3. Click Open to open the results page.



Experiments tab

## Experiment overview tab

1. See the experiment summary, view all images and go to the experiment setup by choosing the respective tab.
2. Open the experiment data by clicking on the experiment result icon or its name in the Guided Assay Result list.
3. Create New Results from this experiment by clicking the button.
4. Reach In-depth Analysis by clicking the respective icon.

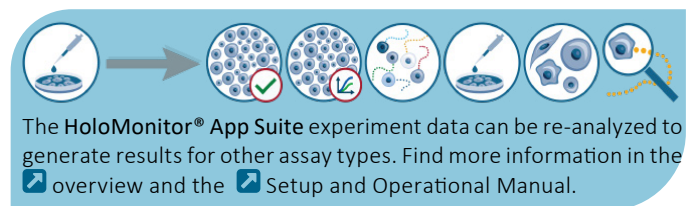


Experiment overview tab

## Kinetic dose response data results tab

- ✓ The assay results are generated during image capturing.
- ✓ The software automatically analyzes quantitative data generated from each image.
- ✓ For a more detailed analysis all results can be exported.

1. The results are given as an interactive Dose-Response curve with the time slider, which can be used to view the dose response over the entire experiment time.
2. Additionally, cell count (#/cm<sup>2</sup>), confluence (%) and mean cell volume (μm<sup>3</sup>) graphs are depicted.
3. For further analysis, export all results to Excel. The exported data include population data based on means, including data for each captured position and standard deviations.



The HoloMonitor® App Suite experiment data can be re-analyzed to generate results for other assay types. Find more information in the [Overview](#) and the [Setup and Operational Manual](#).

## Image analysis tab

- ✓ An image analysis algorithm filters out images of poor quality and excludes them from results data.
- ✓ Include or exclude images from results analysis. See the [image guide](#) for more information.



Dose Response results tab

1. The captured images from the experiment are displayed in a tree-view list. Clicking an item in the tree will show a list of all images contained in the selected level/category.
2. Checked check boxes — all images are included. Empty check boxes — all images are excluded. Check boxes with a dash — some images are included. Symbols in the list show cell analysis or image quality warning.
3. It is possible to adjust the Sensitivity of image(s) and view the image threshold and markers.

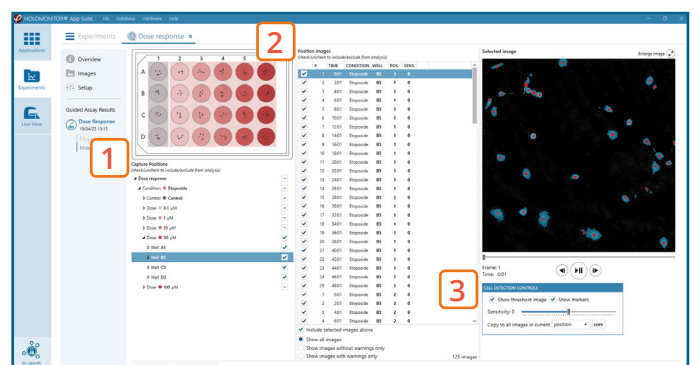


Image analysis tab