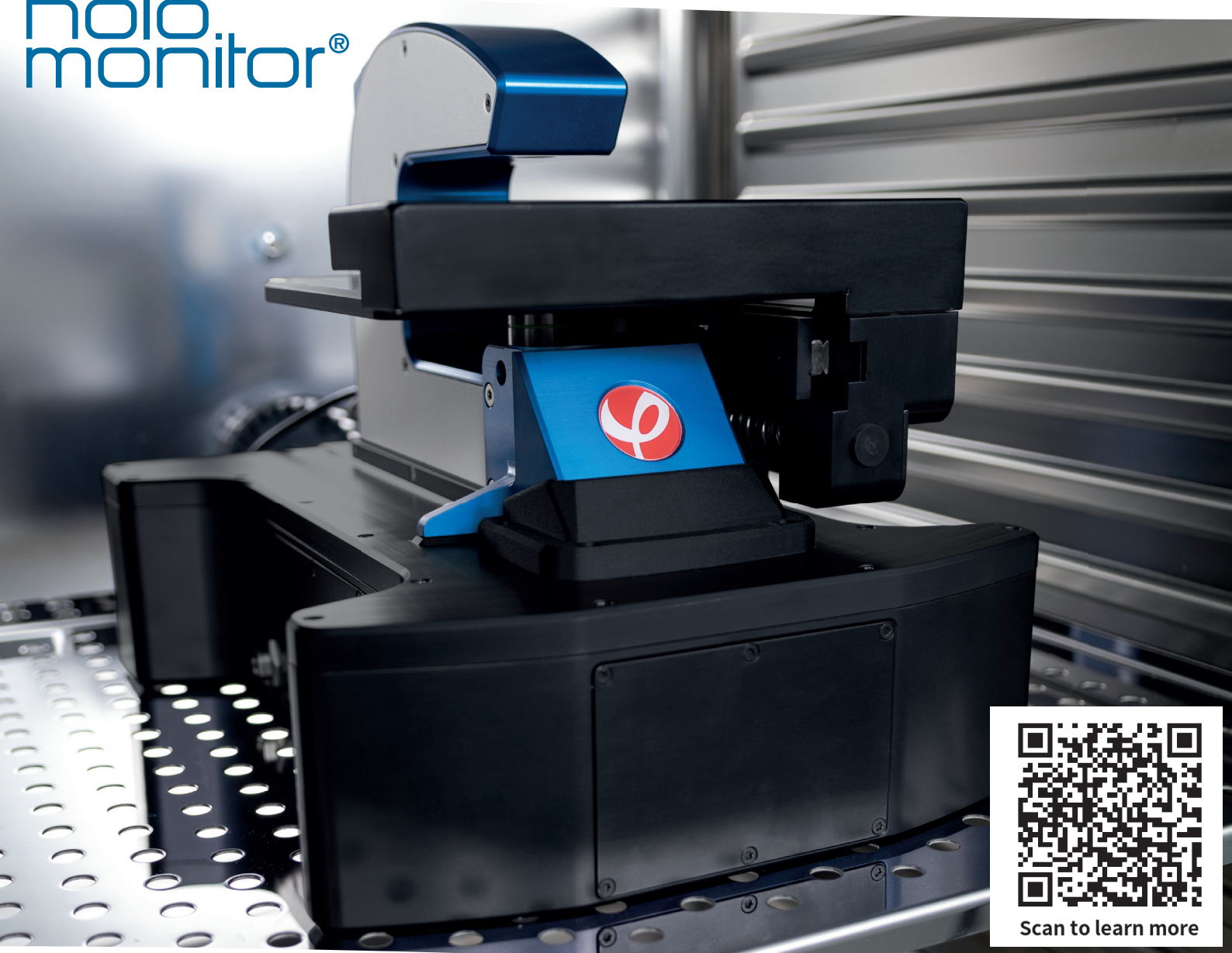


# holo monitor®



Scan to learn more

## HoloMonitor® M4FL

### Featured Applications

Cell death

Co-culture

Uptake assay

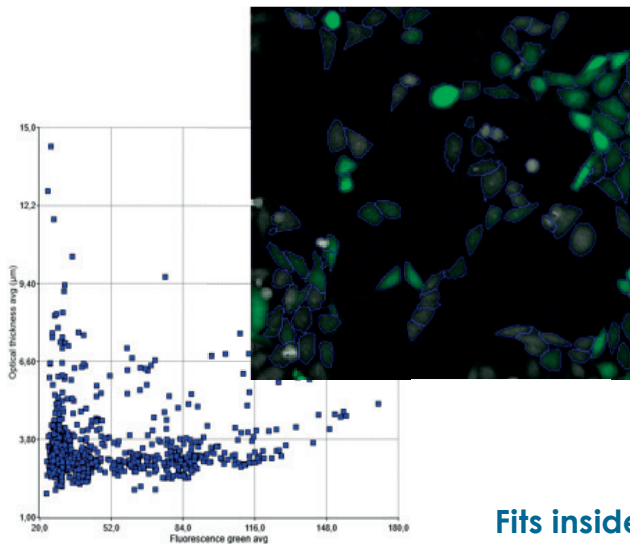
Reporter Gene  
Expression

Transfection  
Efficiency

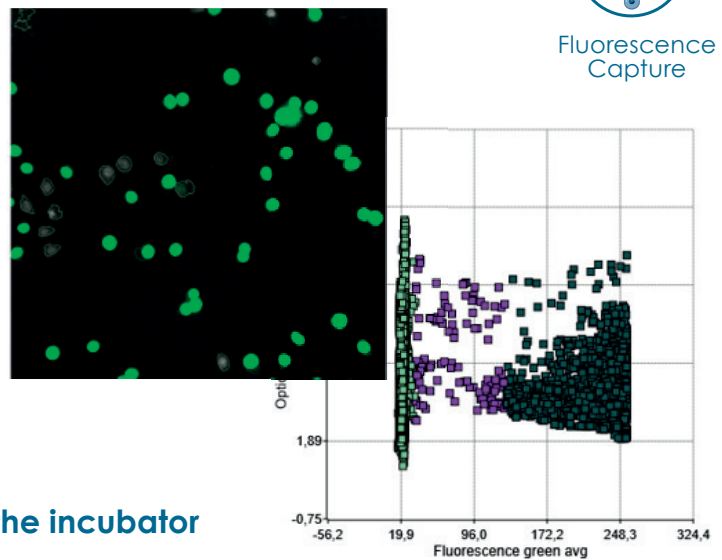
Live Cell  
Staining



Fluorescence Capture



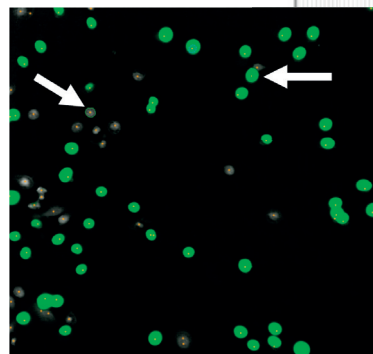
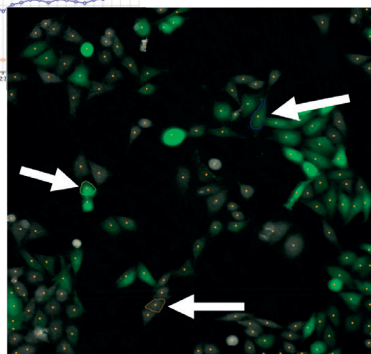
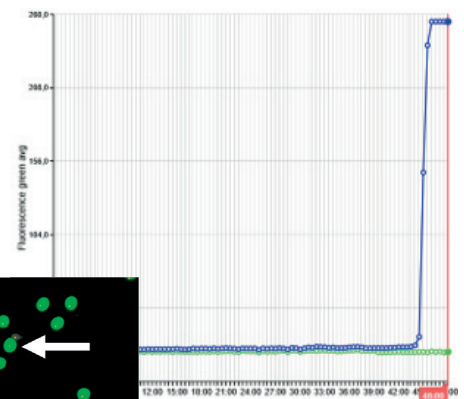
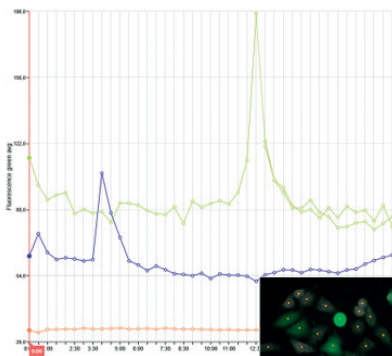
Co-culture



Cell Death

**Fits inside the incubator**  
**Holography with fluorescence**  
**Less fluorescence capture needed**

**Less photocytotoxicity**  
**More quantitative data**



## Technical Specifications

### HoloMonitor® M4FL

**1-channel fluorescence:** Optimized for EGFP (FITC-Cy2)  
**Excitation/Emission:** 470/525 nm  
**Exposure time:** 1 – 1000 ms  
**Field of view:** 567µm × 567µm, 0.25 mm<sup>2</sup>  
**Gain:** 1 – 4  
**Magnification:** 10x, matched with mounted HoloMonitor M4

**Image Resolution:** 0.5 µm  
**Image size:** 1024 × 1024 pixels  
**Dimensions:** 310 x 180 x 85 mm (W × D × H)  
**Weight:** 9.5 kg (with M4)  
**Power:** < 5 W  
**Interface:** USB connector